



NEW YEAR HOT BUYS

Promo Valid: January 1 - March 31, 2026

Boost your shops productivity with industrial tools from FEIN

MULTIMASTER MM 700 MAX BASIC



CORDLESS CIRCULAR SAW

NEW!



CORDLESS JIGSAW

NEW!



14" METAL CUTTING SAW

**SYRACUSE
SUPPLY**

MACHINE TOOLS & INDUSTRIAL SUPPLIES

Syracuse: 315-695-2008

Buffalo: 716-893-3643

syracusesupply.com



* All prices are suggested retail price. Actual selling price is determined by each FEIN Authorized Distributor at the time of sale. All prices and specifications are subject to change without notice.

REMODELING TOOLS

18V 4Ah F-IRON 26 CORDLESS JIGSAW KIT

PART NUMBER: 71360562090

KIT INCLUDES: 1 F-IRON JIG 26 AS, 2 4Ah CORE 18V batteries, 1 Fast charger, 1 best-of jigsaw blade set 5-piece (63503188010), 1 zero clearance blade insert, 1 Allen key 4 mm, 1 non-marring shoe guard cover, 1 dust extraction adapter, 1 L-Boxx pro tool case



REG. PRICE ~~\$649.95~~
SAVE \$100
PROMO PRICE \$549.95

MULTIMASTER 700 MAX BASIC

PART NUMBER: 72296863090

- + Long-life, 450 watt German-made motor
- + Widest range of variable speed control for precise control
- + Oscillating range: 2 x 2.0° for faster cutting performance
- + Best in class vibration dampening



REG. PRICE ~~\$319.95~~
SAVE \$70
PROMO PRICE \$249.95

18V CORDLESS MULTIMASTER 700 MAX TOP KIT 4Ah

PART NUMBER: 71293661090

KIT INCLUDES: 1 AMM700, 2 4Ah CORE 18V batteries, 1 Fast charger, 60 accessories, 1 L-Boxx pro tool case



REG. PRICE ~~\$599.95~~
SAVE \$50
PROMO PRICE \$549.95



SAVE UP TO 50%

Part Number	Blade Set	Pack Size	Blade Type	Reg. Price	Promo Price
35222967300	Starlock Woodworking Assorted Set	3	Wood/Metal	\$29.95	\$14.95
35222952090	General Purpose Starlock Plus Assorted Set	3	Wood/Metal	\$39.95	\$24.95
35222967010	Best of Starlock Wood & Metal Set	6	Wood/Metal	\$39.95	\$29.95
35222967280	Best Of Starlock Sanding	63	Reno	\$59.95	\$29.95
35222967060	Best of Starlock Renovation Set	26	Reno	\$99.95	\$59.95
35222942080	Best of Starlock Plus Wood & Metal Set	6	Wood	\$89.95	\$69.95

TURBO II

PART NUMBER: 92036236090

- + 8.5 gallon capacity
- + 1 micron filtration

REG. PRICE ~~\$549.95~~
SAVE \$100
PROMO PRICE \$449.95



TURBO II HEPA PRO SET

Part Number: 92036060990

- + 8.5 gallon capacity
- + .3 micron filtration
- + HEPA certified
- + Includes hoses & tool attachments

REG. PRICE ~~\$649.95~~
SAVE \$100
PROMO PRICE \$549.95



DON'T FORGET THE BAGS

Part Number
31345062010



T-SHANK JIGSAW BLADES



**18V 4Ah F-IRON 26
CORDLESS JIGSAW KIT**

REG. PRICE \$649.95

**SAVE \$100
PROMO PRICE
\$549.95**

BEST FOR METAL

63503166010 Metall | Stahl Metal | Steel Métal | Acier Metal | Acero
Part Number: 63503166010

63503167010 Metall | Stahl Metal | Steel Métal | Acier Metal | Acero
Part Number: 63503167010

63503168010 Metall | Stahl Metal | Steel Métal | Acier Metal | Acero
Part Number: 63503168010

63503169010 Metall | Stahl Metal | Steel Métal | Acier Metal | Acero
Part Number: 63503169010

63503170010 Metall | Stahl Metal | Steel Métal | Acier Metal | Acero
Part Number: 63503170010

63503171010 Metall | Stahl | Plastik Metal | Steel | Plastic Métal | Acier | Plastique Metal | Acero | Plástico
Part Number: 63503171010

63503172010 Metall | Stahl Metal | Steel Métal | Acier Metal | Acero
Part Number: 63503172010

63503173010 Metall | Stahl Metal | Steel Métal | Acier Metal | Acero
Part Number: 63503173010

63503174010 Metall | Stahl | Aluminium Metal | Steel | Aluminium Métal | Acier | Aluminium Metal | Acero | Aluminium
Part Number: 63503174010

63503175010 Metall | Edelstahl Metal | Stainless steel Métal | Acier inoxydable Metal | Acero inoxidable
Part Number: 63503175010

BEST FOR WOOD

63503176010 Weichholz Bois tendre Soft wood Madera blanda
Part Number: 63503176010

63503177010 Weichholz Bois tendre Soft wood Madera blanda
Part Number: 63503177010

63503178010 Weichholz Soft wood Bois tendre Madera blanda
Part Number: 63503178010

63503179010 Weichholz Bois tendre Soft wood Madera blanda
Part Number: 63503179010

63503180010 Weichholz Soft wood Bois tendre Madera blanda
Part Number: 63503180010

63503181010 Weichholz Soft wood Bois tendre Madera blanda
Part Number: 63503181010

63503182010 Weichholz Soft wood Bois tendre Madera blanda
Part Number: 63503182010

63503183010 Weichholz Soft wood Bois tendre Madera blanda
Part Number: 63503183010

63503184010 Holz | Plastik Wood | Plastic Bois | Plastique Madera | Plástico
Part Number: 63503184010

63503185010 Hartholz Hard wood Bois dur Madera dura
Part Number: 63503185010

63503186010 UNIVERSAL
Part Number: 63503186010

63503187010 Spezial | Plastik | Gipskarton Special | Plastic | Drywall Especial | Plástico | Yeso
Part Number: 63503187010

SAVE UP TO 29%

Part Number	Metal Cutting Blades	Reg. Price	Promo Price
63503172010	Medium Metal 3" long 10/16 TPI (5pk)	\$18.95	\$14.95
63503169010	Medium Metal 3" long 11/13 TPI (5pk)	\$18.95	\$14.95
63503168010	Thin Metal 3" long 12 TPI (5pk)	\$18.95	\$14.95
63503167010	Thick Metal 3" long 18/23 TPI (5pk)	\$18.95	\$14.95
63503166010	Thick Metal 3" long 21 TPI (5pk)	\$18.95	\$14.95
63503174010	Metal Tube 4-3/8" long 12 TPI (5pk)	\$19.95	\$15.95
63503173010	Metal Tube 4-3/8" long 16/25 TPI (5pk)	\$19.95	\$15.95
63503170010	Soft Metal & Plastic 3" long 8 TPI (5pk)	\$19.95	\$15.95
63503171010	Insulated Panels 7" long 21 TPI (5pk)	\$28.95	\$24.95
63503175010	Carbide Blade for Stainless Steel & Heavy Metal 2-3/8" long 24 TPI (3pk)	\$39.95	\$35.95

Part Number	Wood Cutting Blades (5-pack)	Reg. Price	Promo Price
63503176010	Soft/Hardwood & Plywood 3" long - 6TPI	\$11.95	\$8.95
63503177010	Soft/Hardwood & Plywood 5-1/8" 6TPI	\$13.95	\$9.95
63503178010	Fast Wood Cutting 3" long 6TPI	\$13.95	\$9.95
63503179010	Clean Wood Cutting 3" long 10TPI	\$13.95	\$9.95
63503181010	Wood, Laminates & Plastic 3-1/2" long 8TPI	\$13.95	\$9.95
63503183010	Reverse Cut Laminates & Plywood 3" long 10TPI	\$13.95	\$9.95
63503184010	Softwood & Plywood 3" long 17TPI	\$13.95	\$9.95
63503180010	Softwood & Plywood 3" long 10/18TPI	\$18.95	\$14.95
63503182010	Soft Wood & Plywood 3-3/4" long 8/10/11TPI	\$19.95	\$15.95
63503185010	Hardwood 3" long 17TPI	\$24.95	\$17.95
63503186010	Softwood & Plywood 4-3/8" long 10/14TPI	\$24.95	\$17.95

Part Number	Specialty Blades	Reg. Price	Promo Price
63503188010	Assorted Jigsaw Blade Pack (5pk)	\$18.95	\$14.95
63503187010	Carbide for Tile Backer Board & Fiberglass 2-3/8" long 24 TPI (3pk)	\$24.95	\$17.95

METALWORKING TOOLS



18V 6" CORDLESS METAL CUTTING CIRCULAR SAW

PART NUMBER: 71360462090

- + Adjustable cutting depth up to 2-1/4"
- + Achieve straight, long, precise cuts with the provided guide rail adapter
- + Average 150 cuts or 100' on a single 8Ah charge (3/32" mild steel)

SAVE \$100

REG. PRICE ~~\$749.95~~
PROMO PRICE \$649.95



6" MILD STEEL BLADE

PART NUMBER: 63502305000

REG. PRICE ~~\$104.95~~
PROMO PRICE \$69.95

SAVE \$35



7-1/4" METAL CUTTING SAW

PART NUMBER: 69908120000

- + 2-1/2" maximum cutting depth
- + Bevel cut up to 45 degrees
- + Integrated chip collection keeps your job site clean
- + Leaves a workable edge when cutting steel plate, square tube, angle, pipe & tube

SAVE \$80

REG. PRICE ~~\$359.95~~
PROMO PRICE \$279.95



7-1/4" MILD STEEL BLADE

PART NUMBER: 63502007200

REG. PRICE ~~\$54.95~~
PROMO PRICE \$29.95

SAVE \$25



9" METAL CUTTING SAW

PART NUMBER: 69908120001

- + Worm drive and oil bath gearbox makes for a longer lasting tool
- + Quick release depth adjustment for plunge cuts
- + 3-3/8" maximum cutting depth
- + Cutting surfaces are cool to the touch, allowing you to work faster and safer

SAVE \$100

REG. PRICE ~~\$479.95~~
PROMO PRICE \$379.95



9" MILD STEEL BLADE

PART NUMBER: 63502009540

REG. PRICE ~~\$89.95~~
PROMO PRICE \$49.95

SAVE \$40



14" METAL CUTTING SAW

PART NUMBER: 72905361120

- + 5-1/8" maximum cutting depth
- + Chip collection tray keeps your job site clean
- + Cutting surfaces are cool to the touch, allowing you to work faster and safer
- + Depth stop allows you to consistently control your cut depth for reliable, precise cuts

SAVE \$100

REG. PRICE ~~\$599.95~~
PROMO PRICE \$499.95



14" MILD STEEL BLADE

PART NUMBER: 63502014600

REG. PRICE ~~\$179.95~~
PROMO PRICE \$129.95

SAVE \$50



INDUSTRIAL SHOP EQUIPMENT

18 GAUGE
BLK 1.3 CSE NIBBLER
PART NUMBER: 72324260120



SAVE
\$105

REG. PRICE ~~\$754.95~~

PROMO PRICE
\$649.95

16 GAUGE
BLK 1.6 E NIBBLER
PART NUMBER: 71320565090



SAVE
\$100

REG. PRICE ~~\$799.95~~

PROMO PRICE
\$699.95

12 GAUGE
BLS 2.5 E SHEET METAL SHEAR
PART NUMBER: 72303561090



SAVE
\$50

REG. PRICE ~~\$1,149.95~~

PROMO PRICE
\$1,099.95

10 GAUGE
BLK 3.5 E NIBBLER
PART NUMBER: 72324661090



REG. PRICE ~~\$2,826.00~~

PROMO PRICE
\$1,999.95

SAVE
29%

- + Cuts through grooves and cut-outs in sheet metals, tool can turn on the spot.
- + Adjustable cutting direction in three 90° steps
- + Chip protection mesh on vent slots

Capacity:

Mild steel up to 10 gauge (3.2mm)
Stainless Steel up to 14 gauge (1.8mm)

6 GAUGE
BLK 5.0 NIBBLER
PART NUMBER: 72324761090



REG. PRICE ~~\$3,199.95~~

PROMO PRICE
\$2,999.95

SAVE
\$200

- + Indexable cutting direction
- + Powerful 1,700W Motor
- + Up to 4.9 ft/min cutting speed
- + Long life punch and die kit
- + Extra long 16ft. Power Cord

Capacity:

Mild steel up to 6 gauge (5.0mm)
Stainless Steel up to 13 gauge (2.5mm)

PCS 1000E ELECTRIC HACKSAW
PART NUMBER: 72342460090

- + Electronic speed control for optimal cutting speed.
- + Adjustable clamping devices permit miter cuts up to 45° as well.
- + Straight cuts up to 24".

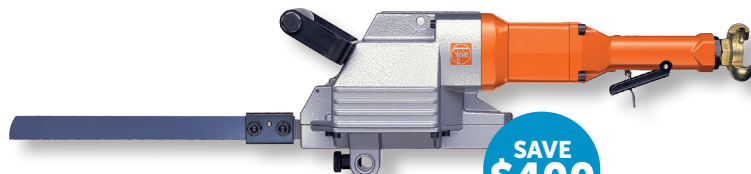


REG. PRICE ~~\$1,999.95~~

PROMO PRICE
\$1,849.95

SAVE
\$150

STS 325R PNEUMATIC HACKSAW
PART NUMBER: 75340813000



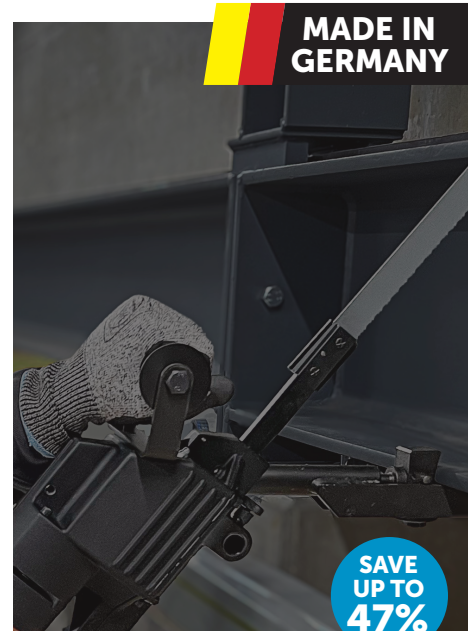
SAVE
\$400

- + Adjustable clamping devices permit mitre cuts up to 45° as well.
- + Clamp and feed device available.
- + Adjustable clamping fixtures.

REG. PRICE ~~\$2,899.95~~

PROMO PRICE
\$2,499.95

MADE IN GERMANY



SAVE
UP TO 47%

Part Number	Blades	Reg. Price	Promo Price
63503070000	12" L, 12 TPI, HSS	\$24.40	\$14.95
63503064005	16" L, 16 TPI, HSS	\$34.00	\$19.95
63503072002	20" L, 14 TPI, HSS	\$70.00	\$39.95
63503073006	24" L, 14 TPI, HSS	\$85.00	\$44.95
63503098001	24" L, 8 TPI, HSS	\$67.00	\$44.95
69908104001	37" L, 12 TPI, HSS	\$112.00	\$69.95

Boost productivity and increase jobsite safety by taking the vise wherever you need it.



VERSAMAG SYSTEM

VERSAMAG MAGNETIC VISE

PART NUMBER: 90701004020

REG. PRICE ~~\$599.95~~

SAVE 25% **PROMO PRICE \$449.95**

ALL METAL CONSTRUCTION

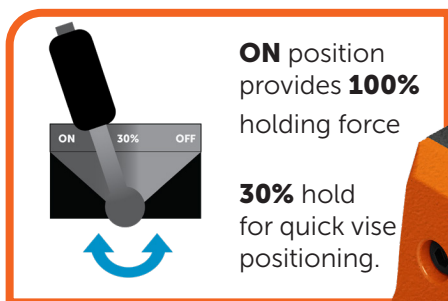
Multi-function jaw quickly grips workpieces safely. Large 4" jaw capacity.

PRECISION

Machined surface provides smooth jaw action while clamping.

MANEUVERABILITY IN MIND

Strong Permanent Magnet provides 1,750lb holding force on 1" steel plate. Magnet can also be easily adjusted.



ON position provides **100%** holding force

30% hold for quick vise positioning.



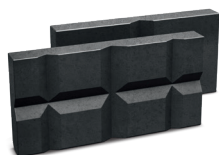
EASY TO OPERATE

Tool-free set up with everything you need stored on VersaMAG.

TECHNICAL DATA	
JAW HEIGHT (IN)	1.57"
CLAMPING WIDTH (IN)	4"
MAGNETIC FOOT DIMENSIONS (IN)	8.35" x 2.75"
MAGNETIC HOLDING FORCE (LBF.)	1,750
WEIGHT (LBS)	16
JAW WIDTH (IN)	3.94"
INCLUDES	1x permanent magnet, 1x vise, 1x socket head wrench (3 mm), 1x safety strap



VersaMAG ACCESSORIES Only compatible with the FEIN VersaMAG.



2-1/3 inch Oversize Jaw

PART NUMBER: 32422420010

Perfect for machining larger flat and round materials with a diameter of up to 4 inches.

\$49.95

NEW!



Aluminium Prism & Blank Jaws

PART NUMBER: 90701010010

Flat material can be clamped with ease thanks to the 90° milled slot at the top. No scratching of the material – superlative quality even with sensitive workpieces, such as stainless steel, aluminium or plastics.

\$99.95

NEW!

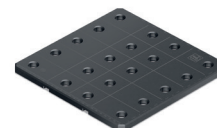


Universal Panel

PART NUMBER: 90701008030

Ultimate convenience with the VersaMAG universal plate. Easy attachment of measuring devices, tablets or phones for hands-free use on any magnetic surface.

\$159.95



Welding plate

PART NUMBER: 90701005020

Long-life welding plate with a hole diameter of 5/8" on a 10 x 10in. plate. Plasmatised product for good surface protection, also features a prefabricated drill pattern for Demmeler and Siegmund elements.

\$214.95