



## QUICK SIX S2 BARFEED

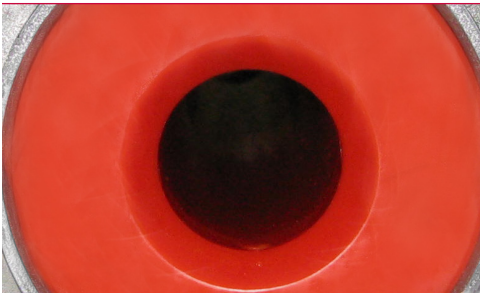
COMPACT, SHORT, AUTOMATIC BAR  
FEEDER FOR FIXED HEADSTOCK LATHES

Diameter range: 3/8" - 3 - 1/8"  
(10 mm to 80 mm)

Overall barstock length: 27.5" to 6'3"

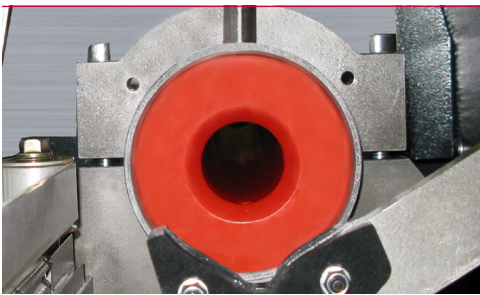


YOUR "ONE-STOP-SHOP"  
FOR MACHINE-TOOL PERIPHERALS



### The 6-Foot Advantage

The Quick Six S2 pushes productivity to new limits by quickly and efficiently loading 6-foot bar stock into your turning machine. This optimum length bar stock can safely turn faster than 12-foot length while minimizing bent bar issues. The Quick Six S2's compact design takes up less valuable floor space. Best of all, one person can easily load the 3/8" to 3-1/8" diameter 6-foot bar stock thus reducing labor cost. What about headstock length bar feeding systems? The Quick Six S2 deep sixes them too with fewer bar cuts and remnants, and longer unattended operation.



### Hydrostatic Support System

Guiding bar stock precisely with no vibration and friction is essential to achieve the highest quality production.

Using field-proven principles, the Quick Six S2 guides bar stock through a single guide tube without scratching the bar stock when loading. Pressurized hydrostatic oil film is used to absorb vibration and friction. This quick change guide tube properly supports the bar to assure high spindle speeds.



### Unattended Operation

Continually loading new bar stock increases your production time and is costly. Your competition could be a step ahead by reducing their production time with a bar feed that loads bar stock simultaneously.

The standard chain magazine holds 7 pieces of bar stock and can be used with an optional lower horizontal rack. For added safety the chain magazine is secured by a light beam. If the light barrier is interrupted, the loader will not start or move.

Manual lifting can be hazardous and painful for a machine operator. The Quick Six S2's chain elevator design omits the manual lifting of barstock. The Quick Six S2 is designed with an elevator method to raise bars up and into position. The elevator design increases safety aspects while operating the bar feeder.

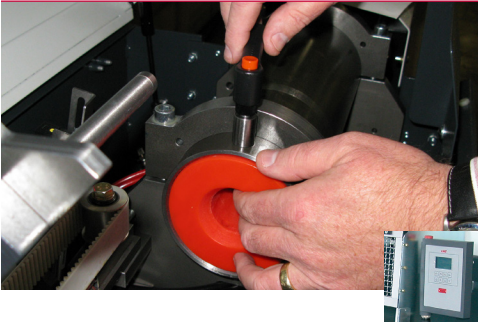


### Making more room without compromising on precision

To change spindle liners, space must be created between the magazine bar loader and the headstock. The magazine bar loader moves without compromising its stability and, therefore, its precision.

Z-axis retraction facilitates access to the spindle for changing spindle liners or for lathe maintenance operations. The chassis retracts up to 15.5" (390 mm) on the upper part of the stands and maintains perfect alignment with the spindle. This mechanism saves time spent in realignment.

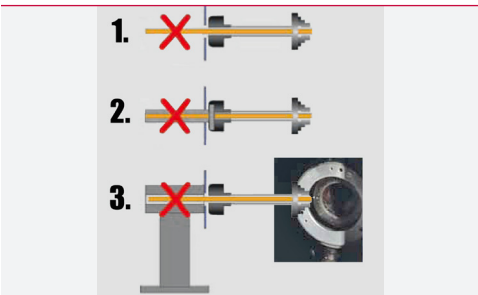




## Efficient Diameter Changeover

Complicated and time consuming diameter changeover can hinder your production increasing unnecessary cost.

The Quick Six S2 offers the industry's widest range for a 6-foot automatic magazine bar loader accepting 3/8" to 3-1/8" diameter bar stock. Changing the single guide tube is quick and easy in less than 4 minutes. When changing diameter, simply follow the prompts on the remote control to enter the bar diameter, part length and guide tube ID. The Quick Six S2 does the rest in record time.



## Safety

One of the most obvious examples of safety risk is the bar protruding from the back of the lathe without appropriate support.

The Quick Six S2 offers a professional and safe solution to this often badly-managed danger. The Quick Six S2 guarantees safe bar guiding up to 6' regardless of spindle length. The Quick Six S2 eliminates temporary and hazardous solutions currently used to work in half-bars with short bar loaders, such as:

1. Allowing the bar to protrude without support
2. Extended spindle liners
3. Added bar supports



## Maximizing Performance

The way in which the bar loader is set up has an impact on the performance of the lathe/magazine bar loader duo. At this stage, the technician's skills, experience and knowledge, in addition to the equipment's features, is added value.



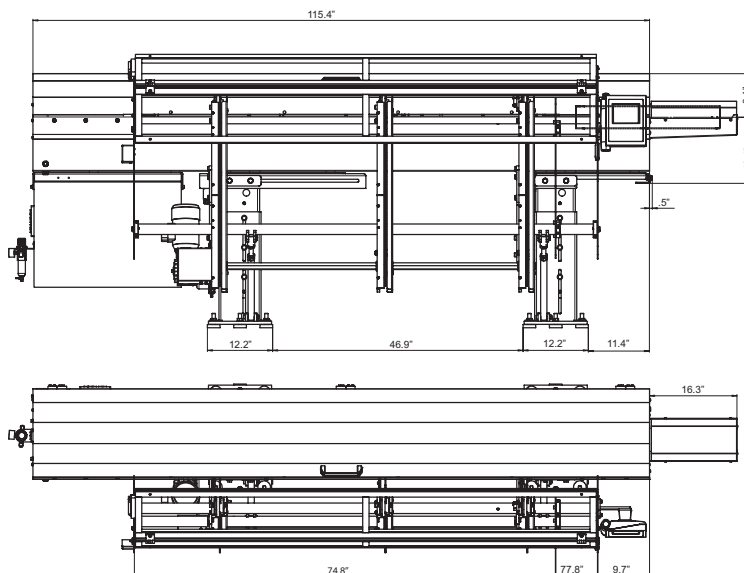
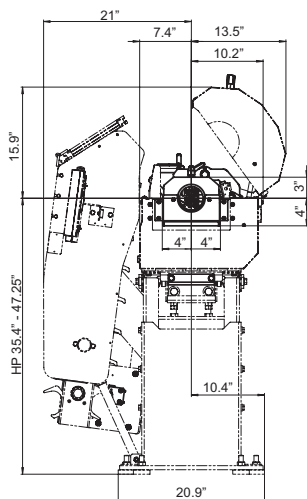
# QUICK SIX S2 BARFEED

## TECHNICAL SPECIFICATIONS

Specifications subject to change without notice

Capacity		
Diameter	mm	10 - 80 (3/8" to 3 - 1/8")
Bar Length (27.5" to 6'3")	mm	700 - 1900
Loading System		Chain Loading Rack
Loading Capacity	mm	7 Bars
Loading		Front
Shipping Weight	lbs	2,145
Applications		
Type of Headstock		Fixed
Z Axis Retraction	mm	470 (19")
Changeovers		
Complete changeover	min	4 or less
Driving Systems and Bar Support		
Motor		Servo
Drive		Notched Belt
Options		
Lower horizontal rack magazine to increase total loading capacity		

**Barstock Straightness Specifications and Performance**  
For optimum rotational performance speeds, bar stock straightness needs to be .020" per 3.25 feet, non accumulative. Bar stock out of this tolerance will not run at optimum RPM. Other factors such as material type (brass, copper, bronze and other malleable materials), clamping efficiency of the machine workholding, alignment of the bar feed, oil type, bar preparation and spindle liners will affect optimum RPM capability of the system.



### YOUR "ONE-STOP-SHOP" FOR MACHINE-TOOL PERIPHERALS

LNS provides a full range of barfeeders, chip conveyors, coolant management systems, air filtration systems, and workholding systems that is second to none on the market. We are known in the industry for the solid experience we have gained over several decades in an exceptionally wide range of applications, our excellent customer service, and our technical support. This support is ensured by highly qualified technicians who are available throughout North America.



LNS America  
4621 East Tech Drive  
Cincinnati, Ohio 45245

513-528-5674  
Sales@LNS-america.com  
www.LNS-america.com



LNS America, Inc.  
ISO 9001-10013185  
LNS Turbo  
ISO 9001-10000276  
Facilities covered by this mark have been  
evaluated to international quality assurance  
standards by UL DQS Inc.